

# DRAWING KEY

FOLD TYPES

A - FOLD (ABOVE)

B - FOLD (BESIDE)

C - FOLD (COVER)

LINE TYPE/COLOR

CUT

50% SCORE

CREASE

45° DOUBLE BEVEL

45° SINGLE BEVEL

EDGE BEVEL

CAVITY

REMOVE PAPER

REFERENCE/  
OPTIONAL

SYMBOLS

PART  
NUMBER

NAME

MODEL  
VERSION

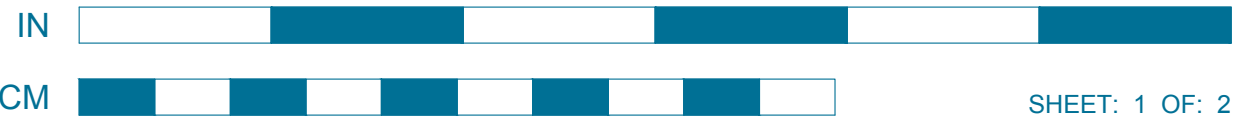
QUANTITY

1L 1R

MIRRORED  
PART

Bloody Baron

Designed By: Dan Sponholz (SPONZ)



WEIGHT W/O BATTERY:

14.1 oz 400 g

RECOMMENDED SETUP:

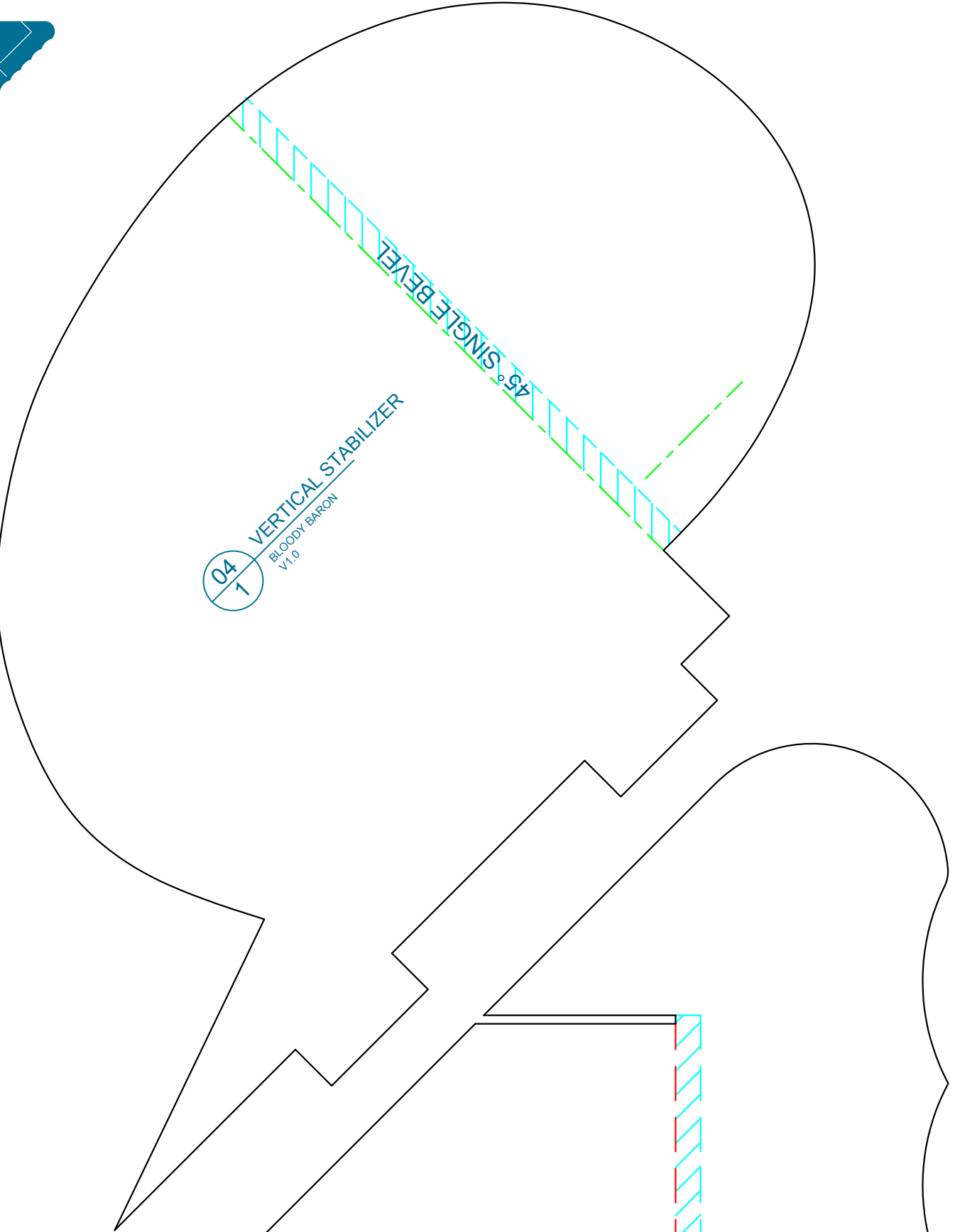
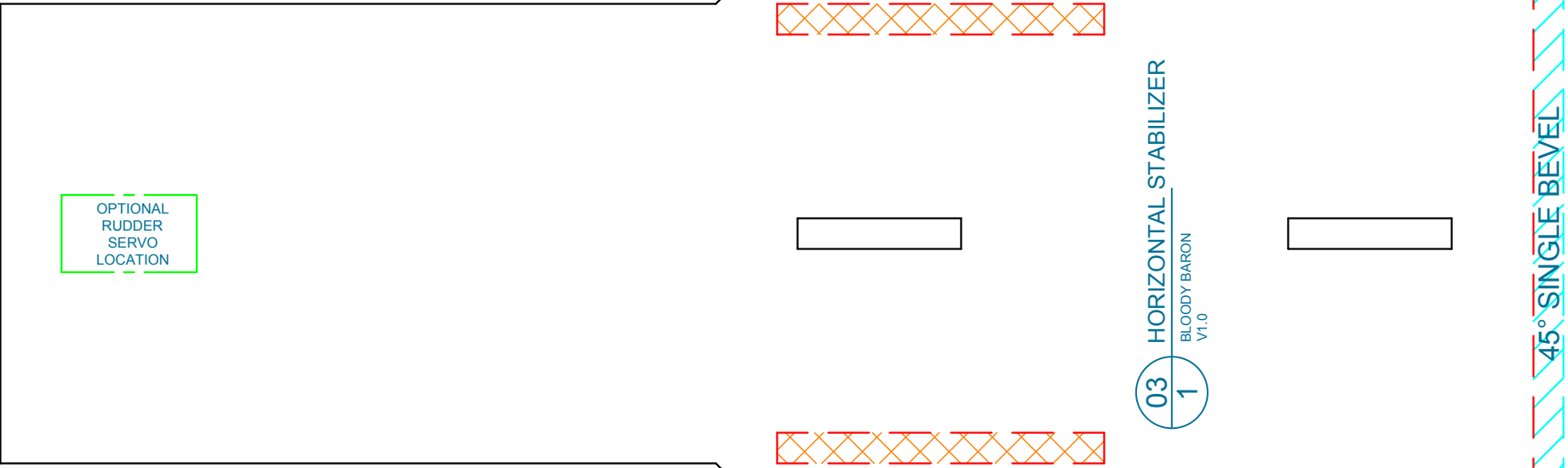
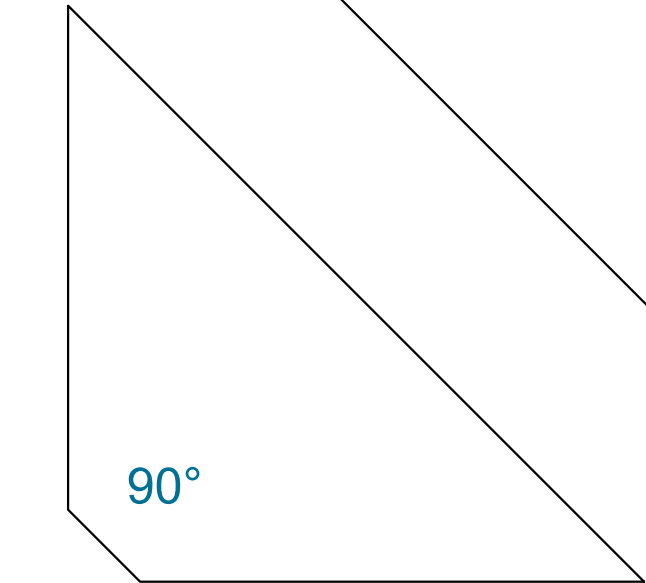
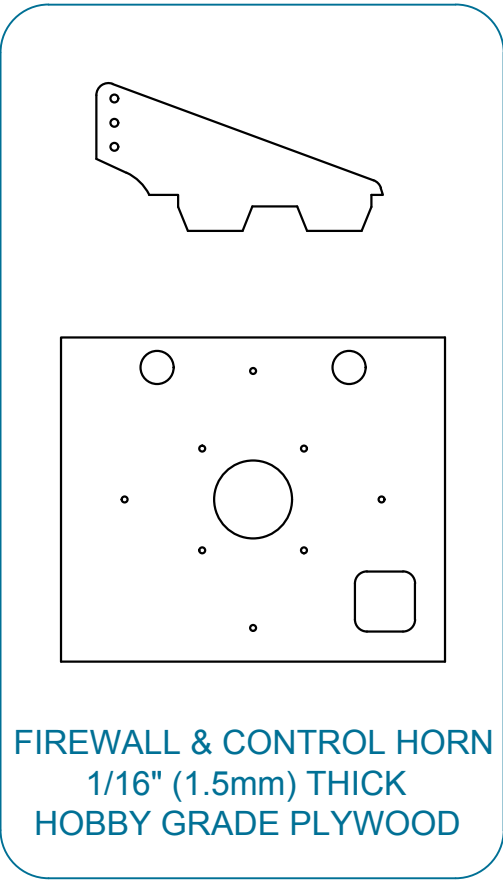
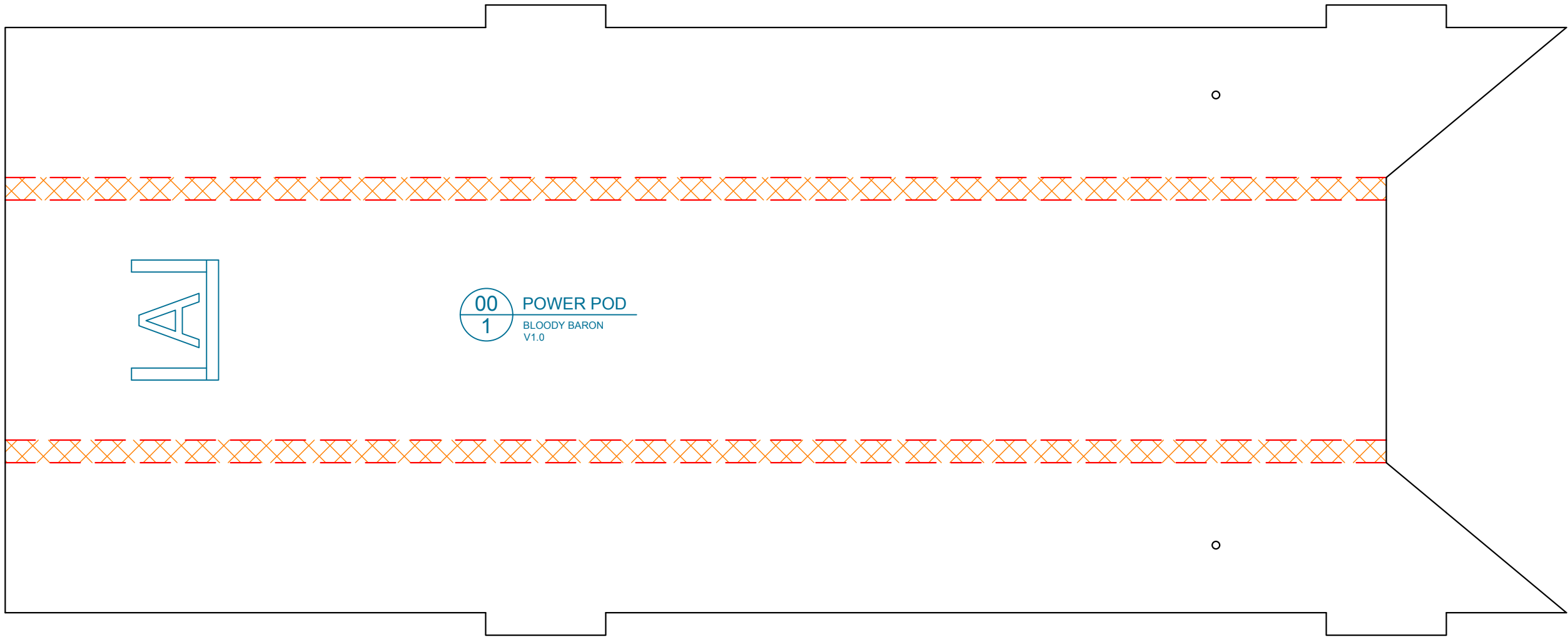
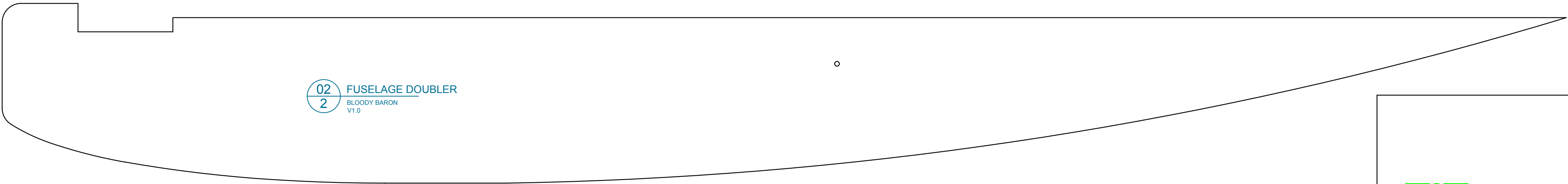
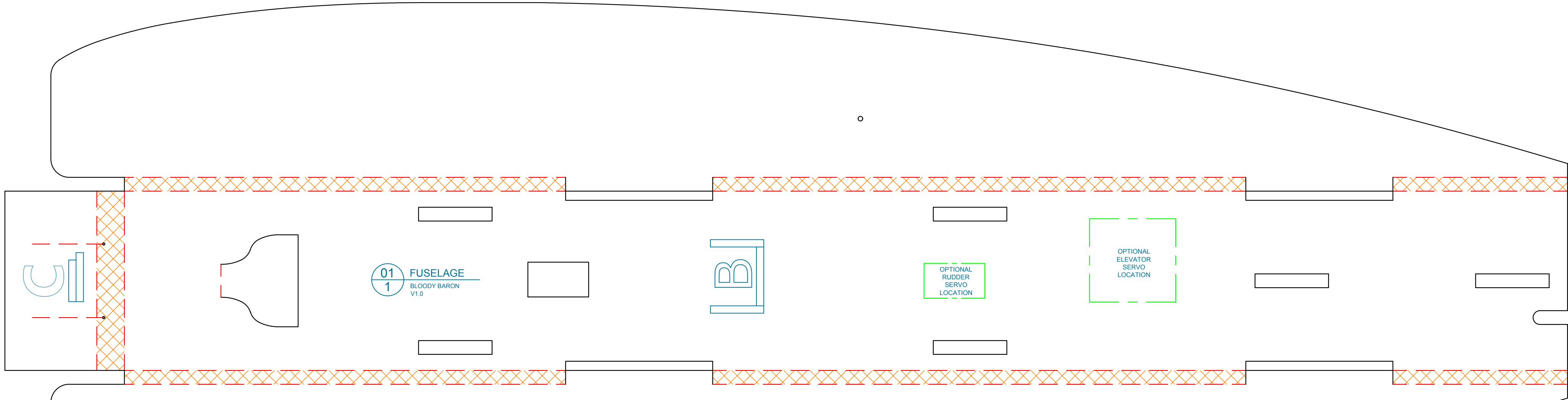
THROW 20°  
AILERON: 20°  
ELEVATOR: 20°  
RUDDER: 20°  
EXPO 30%  
30%

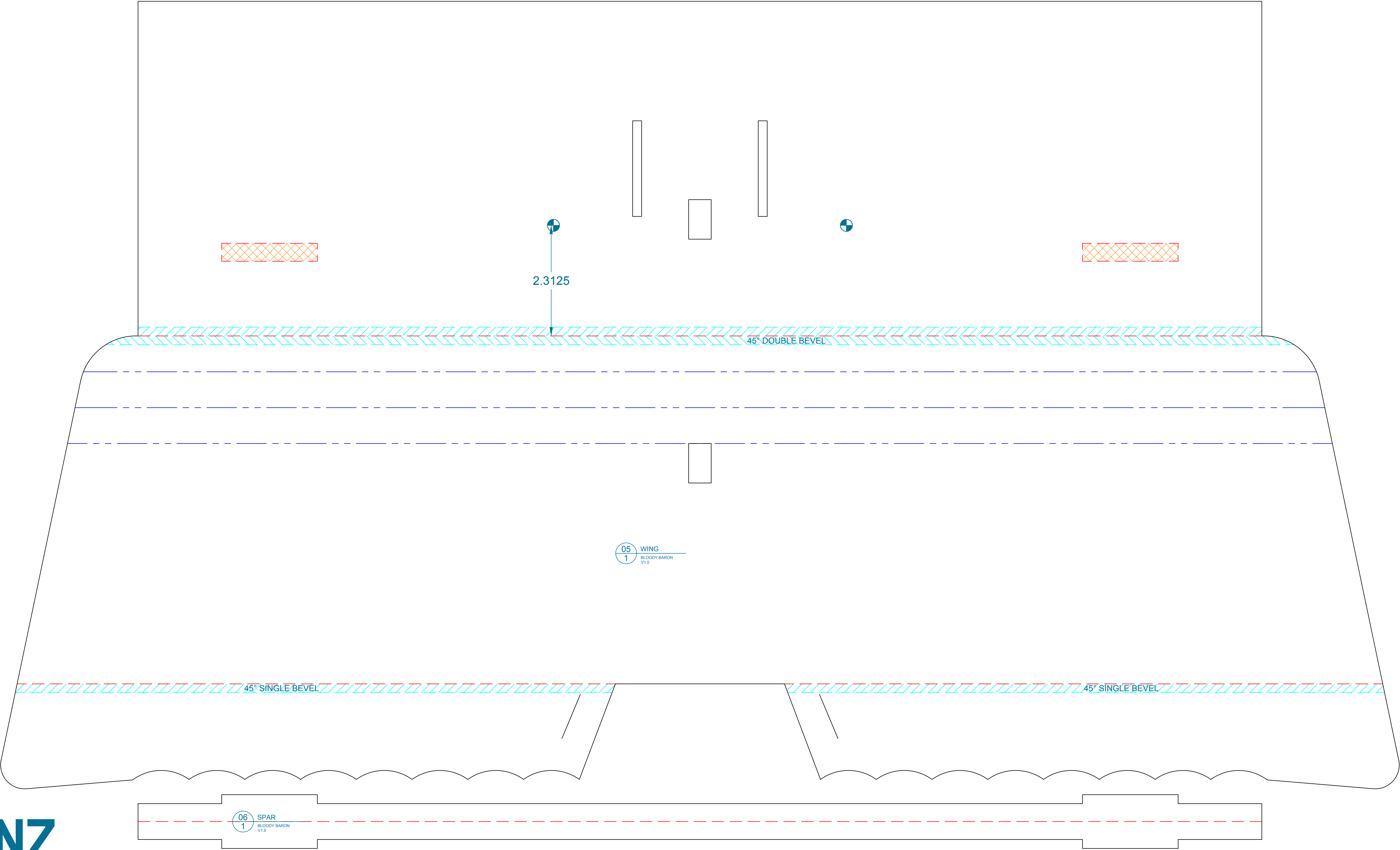
RECOMMENDED EQUIPMENT:

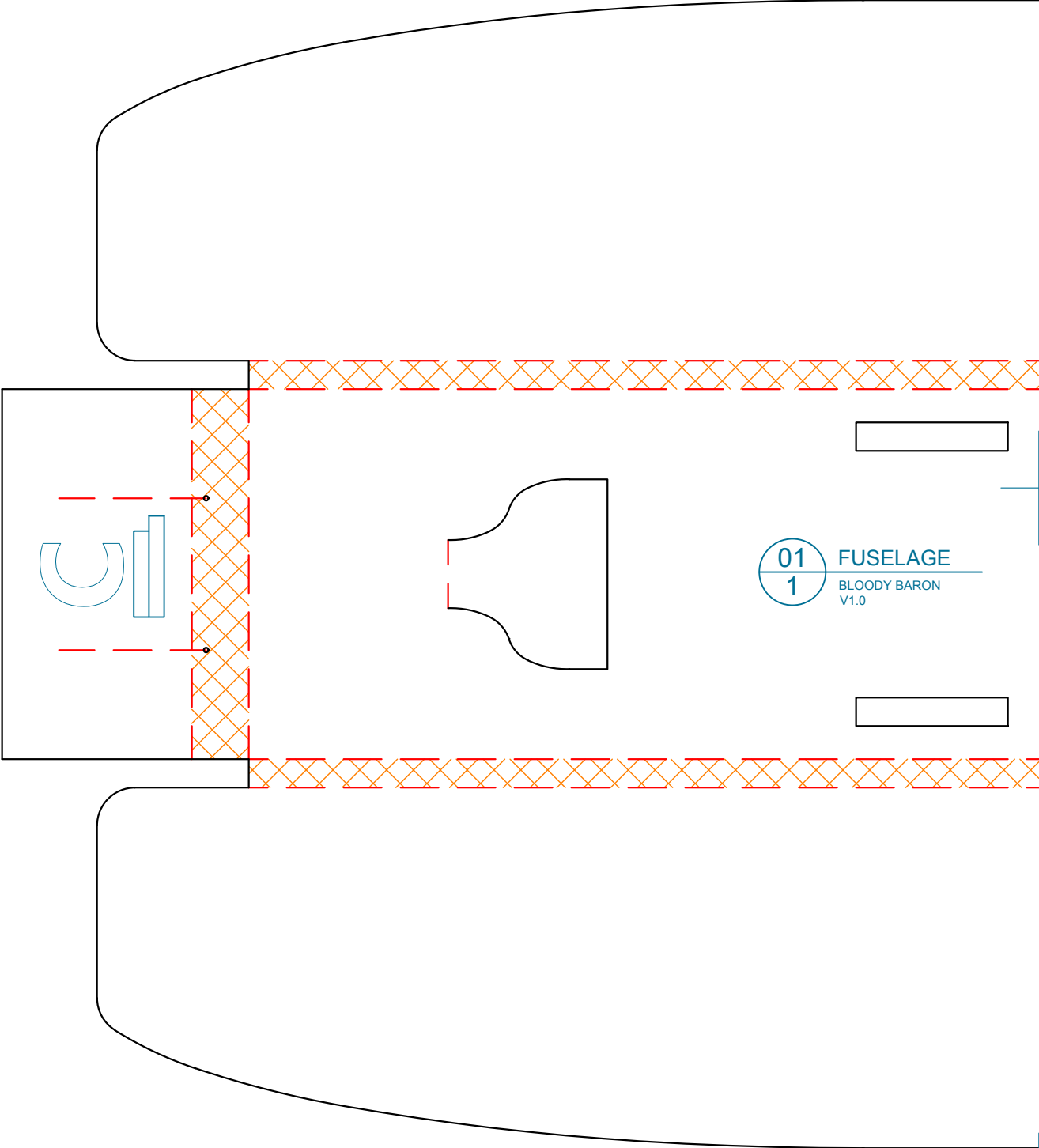
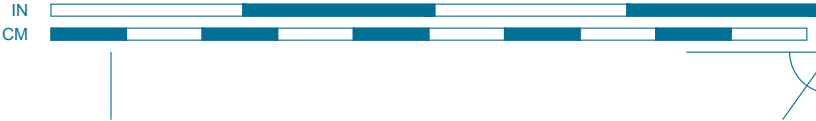
MOTOR: NTM 28-26 1200kv  
ESC: 25 amp  
BATTERY: 1300 - 2200 mAh 3s  
SERVOS: 9 gram X 2 (X 3 with Rudder)  
PROP: 8 X 6 APC

AIRCRAFT SPECIFICATIONS:

LENGTH: 24 in 610 mm  
WING SPAN: 29.25 in 762 mm  
WING AREA: 243.89 in² 15.7 dm²  
CG: 2.313 in 58.7 mm  
AUW: 18 oz 510 g  
WL: 10.6 oz/ft² 32.5 g/dm²  
WCL: 8.2



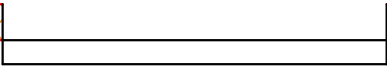
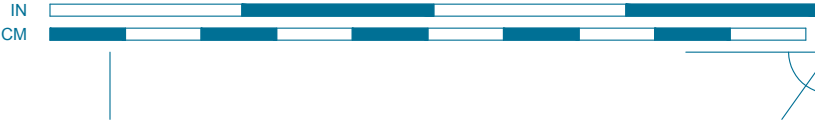




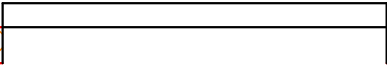
01  
1

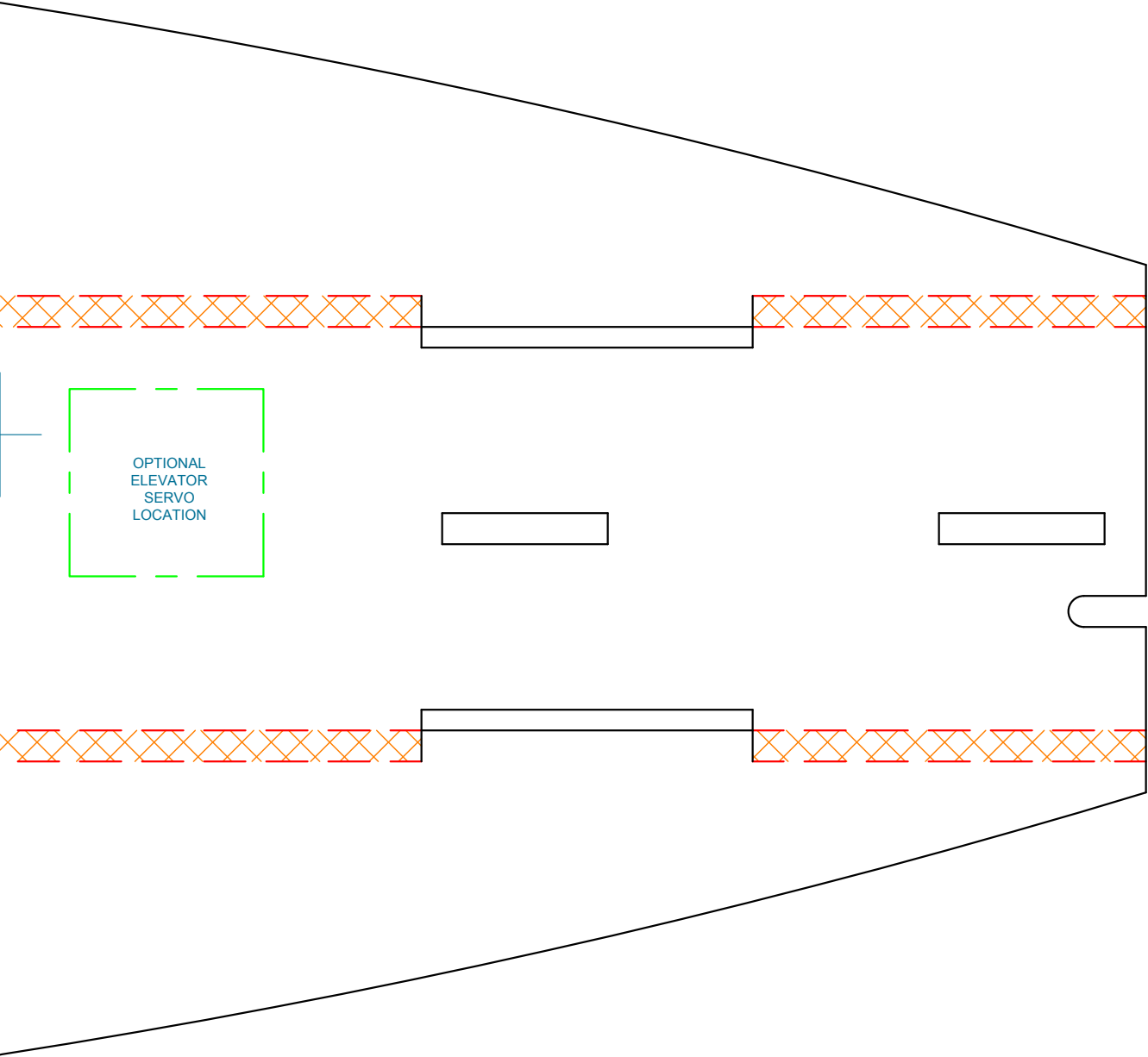
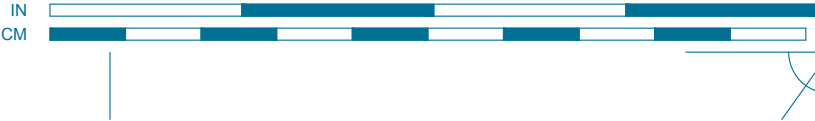
FUSELAGE

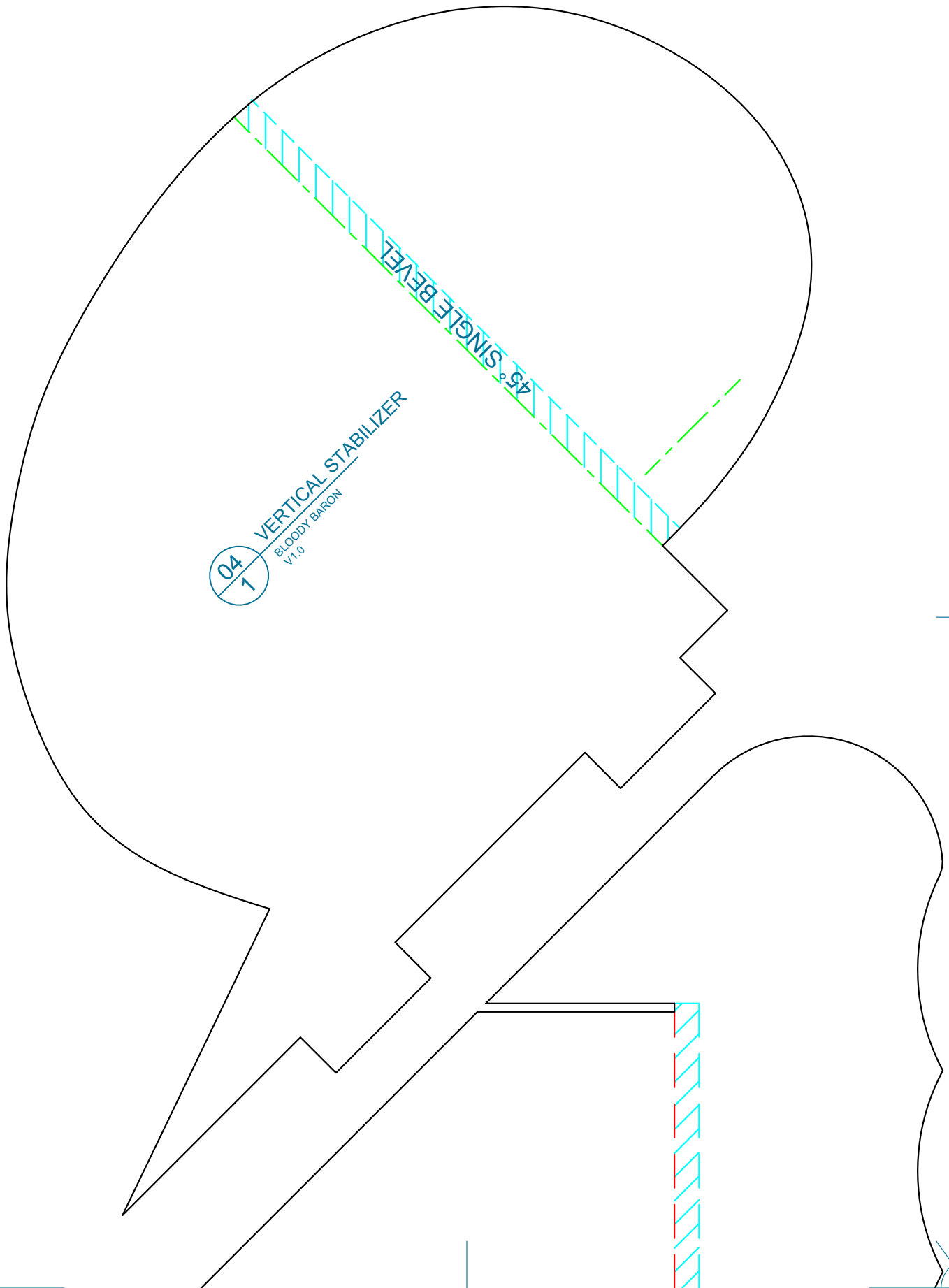
BLOODY BARON  
V1.0



OPTIONAL  
RUDDER  
SERVO  
LOCATION







02  
2

FUSELAGE DOUBLER

BLOODY BARON  
V1.0

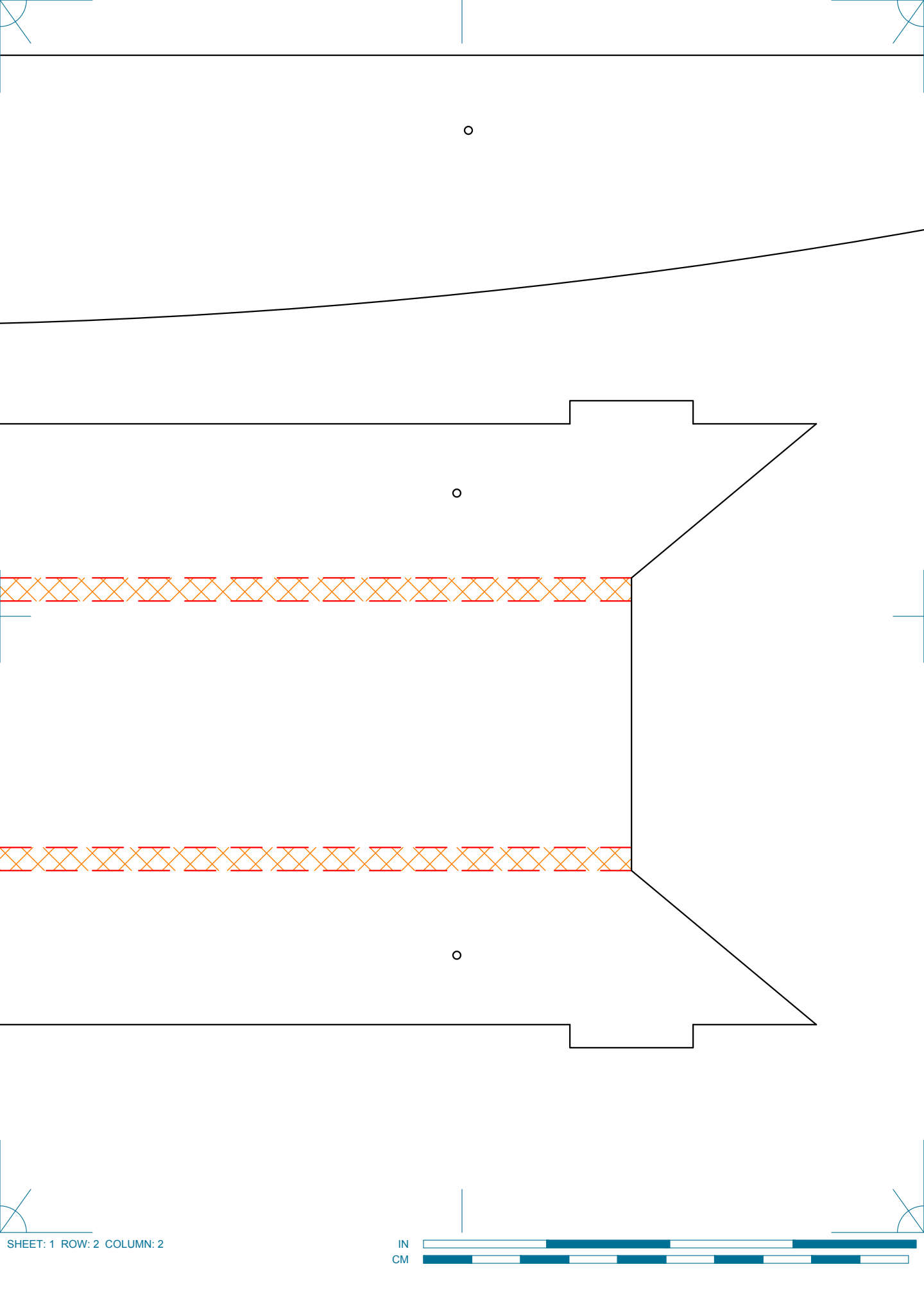


00  
1

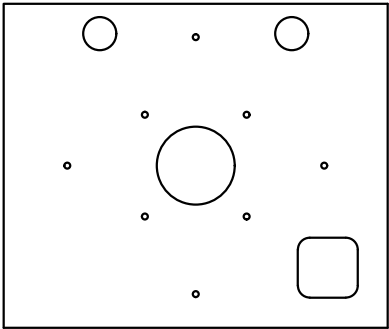
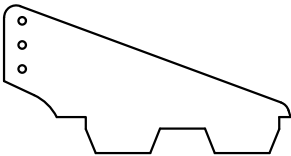
POWER POD

BLOODY BARON  
V1.0



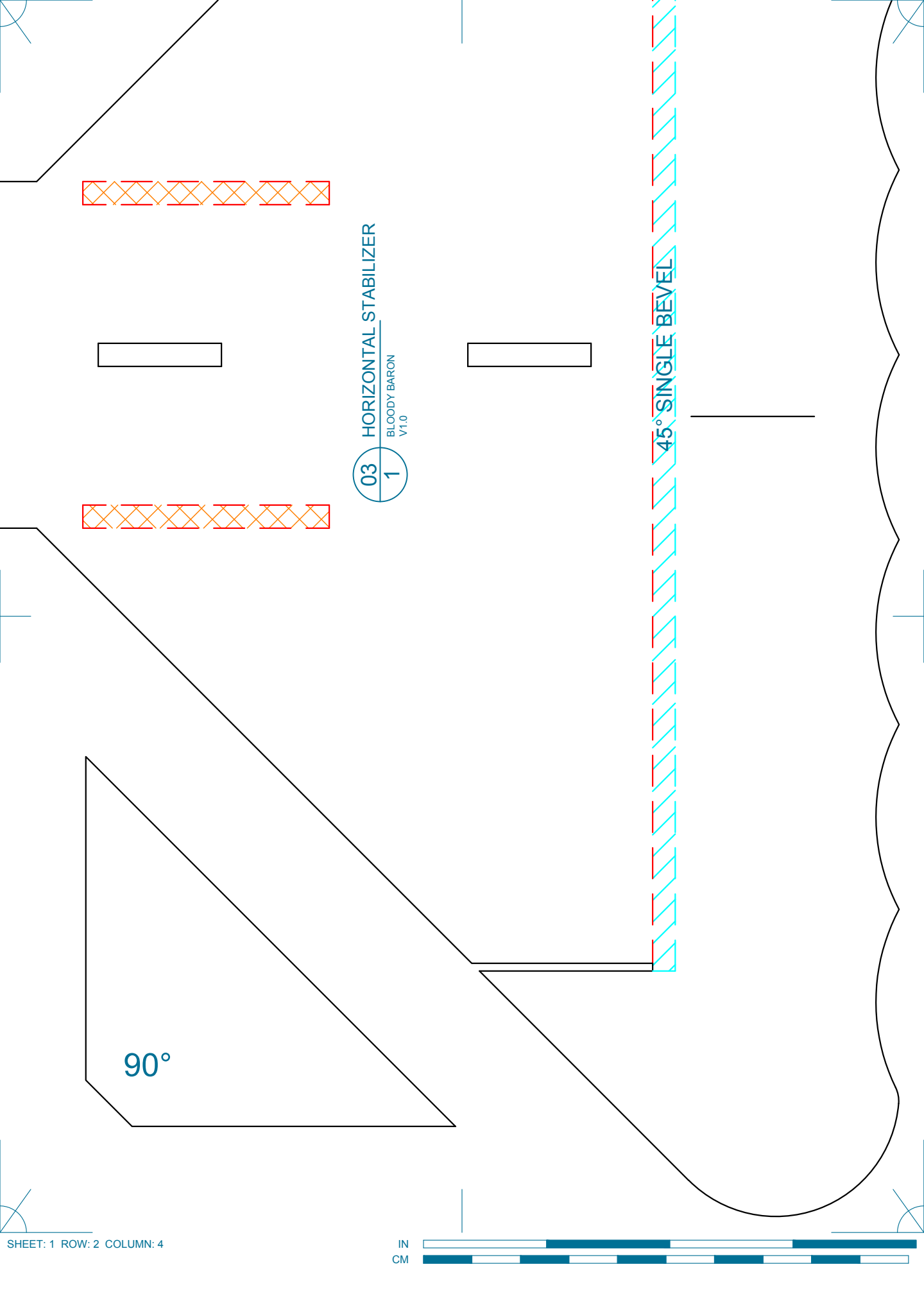


OPTIONAL  
RUDDER  
SERVO  
LOCATION



FIREWALL & CONTROL HORN  
1/16" (1.5mm) THICK  
HOBBY GRADE PLYWOOD

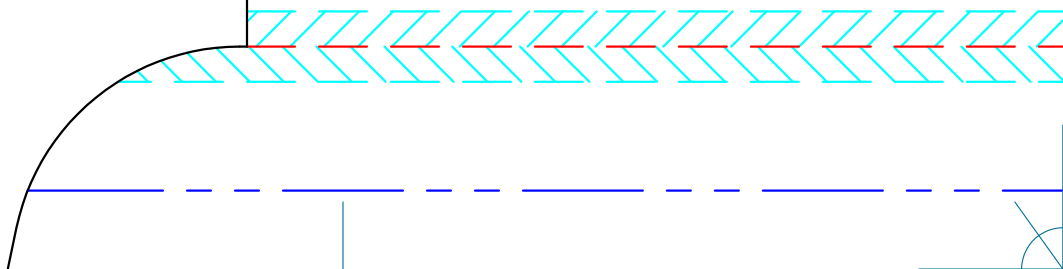
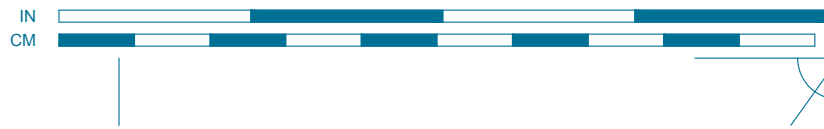


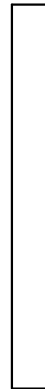
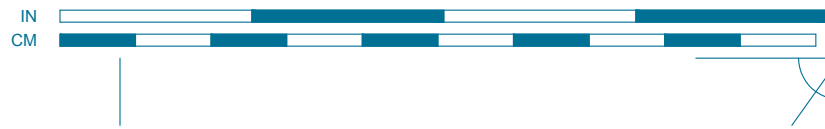


03 HORIZONTAL STABILIZER  
1 BLOODY BARON  
V1.0

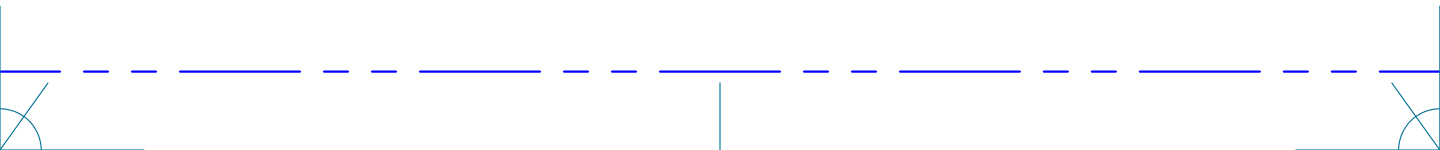
45° SINGLE BEVEL

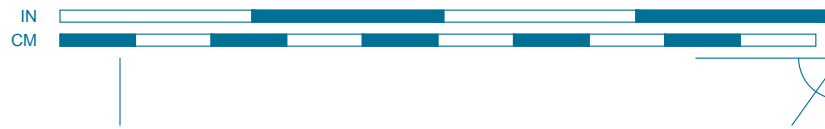
90°





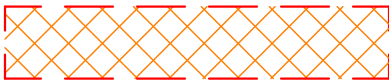
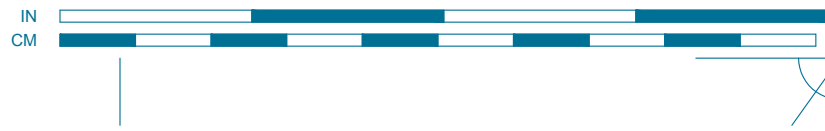
2.3125

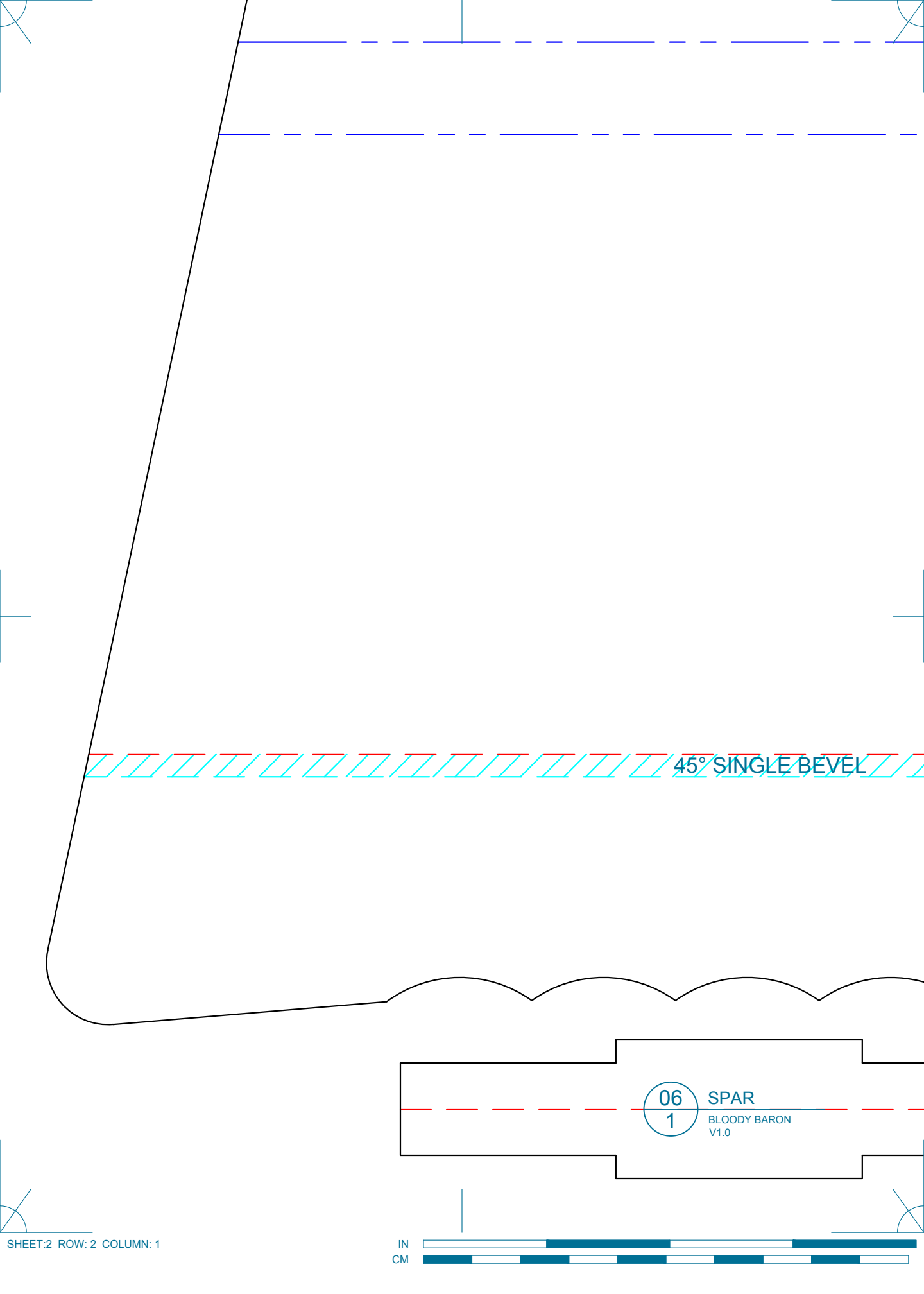




45° DOUBLE BEVEL







45° SINGLE BEVEL

06  
1

SPAR  
BLOODY BARON  
V1.0

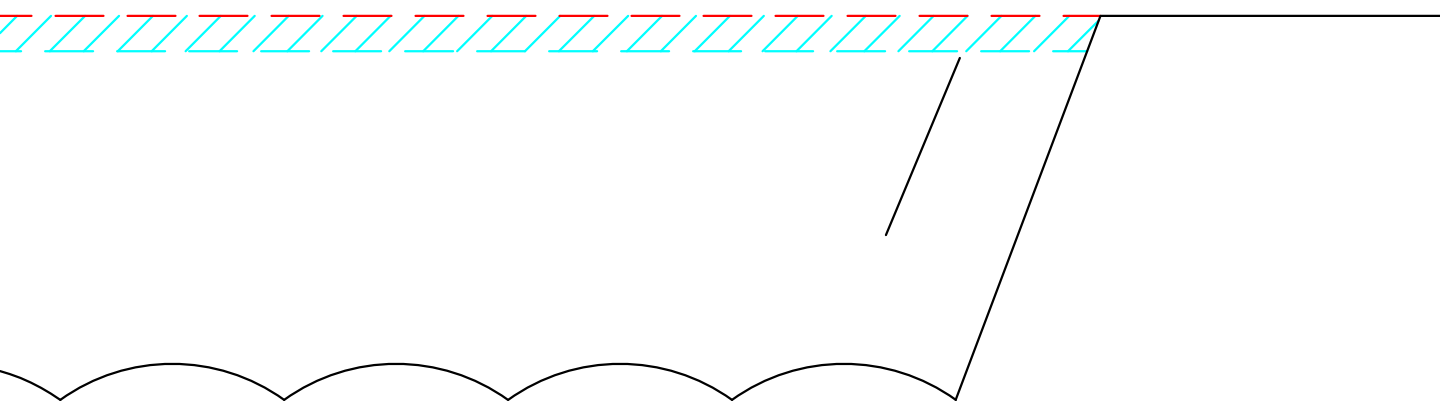
IN  
CM

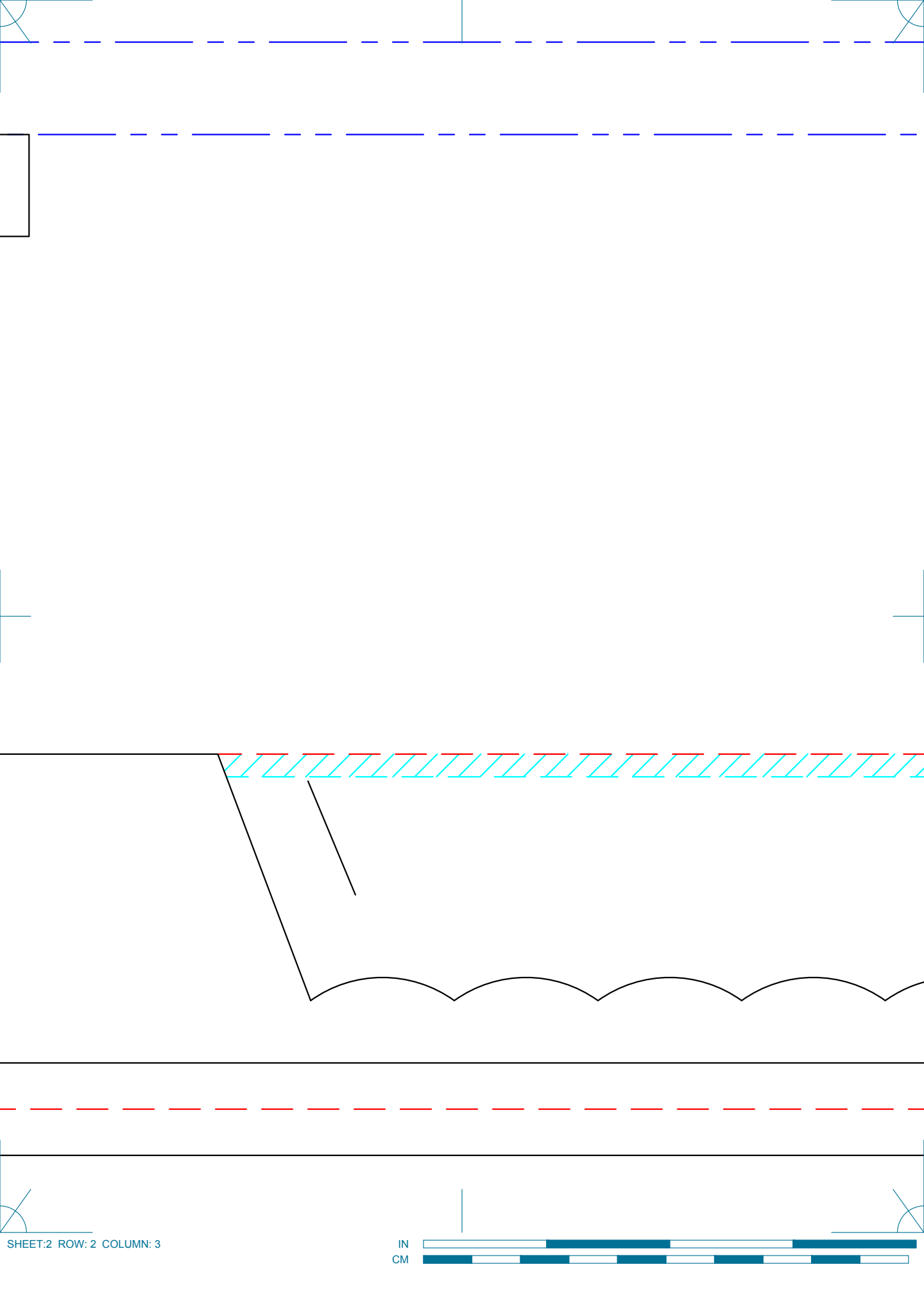


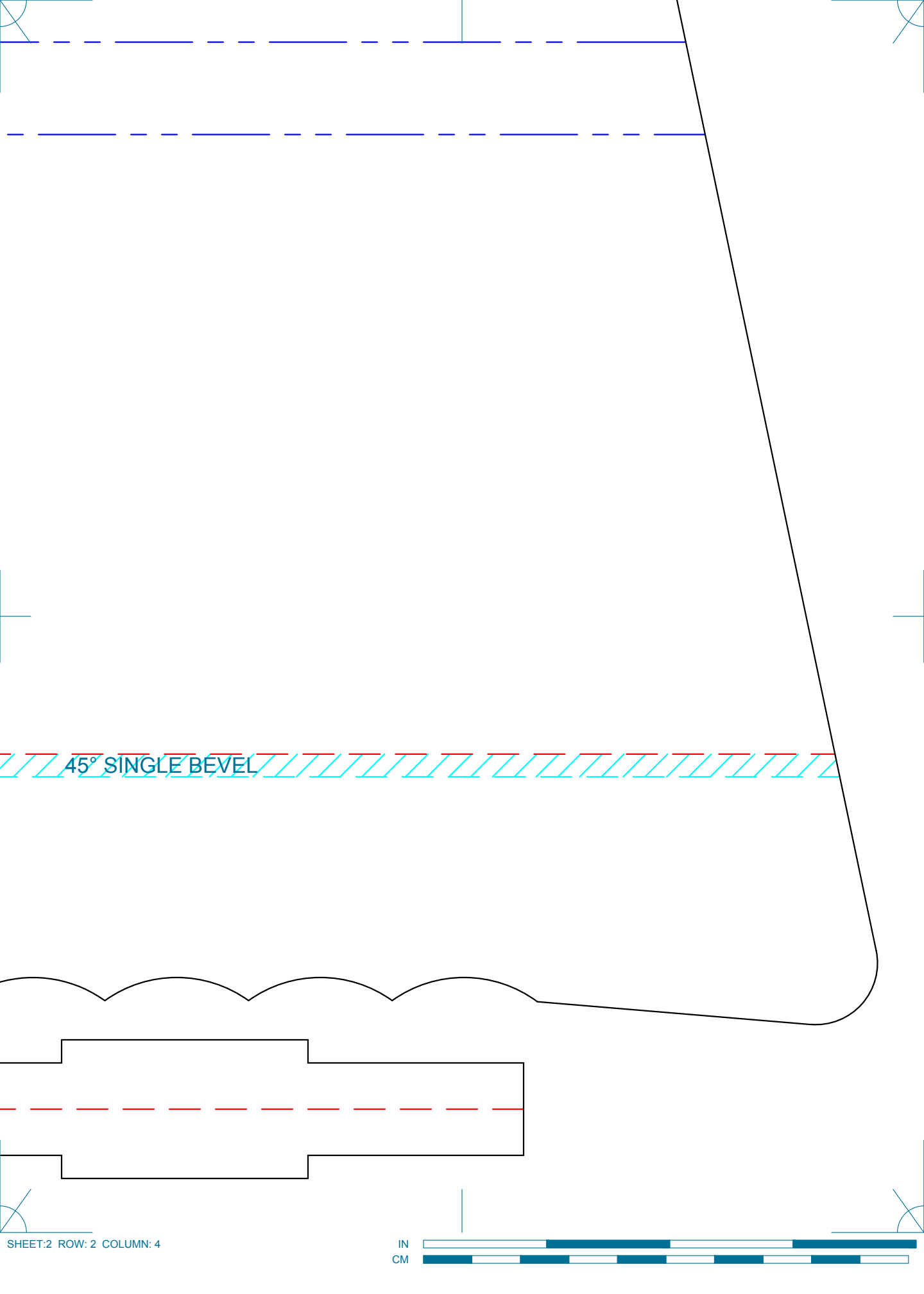


05  
1

WING  
BLOODY BARON  
V1.0







45° SINGLE BEVEL